

ANOPHELES STEPHENSI

LOCATION:

India and South Asia



This map represents an estimate of the potential range of *Anopheles stephensi*. It is not meant to represent risk for spread of disease.



4.0 - 7.0 mm / 0.16 - 0.28 in

FACTS:



Lays eggs in containers, catch basins, stagnant water and streams.



Prefers humans over other mammals and birds.



Active 365 days per year.



Prefers to feed at night.

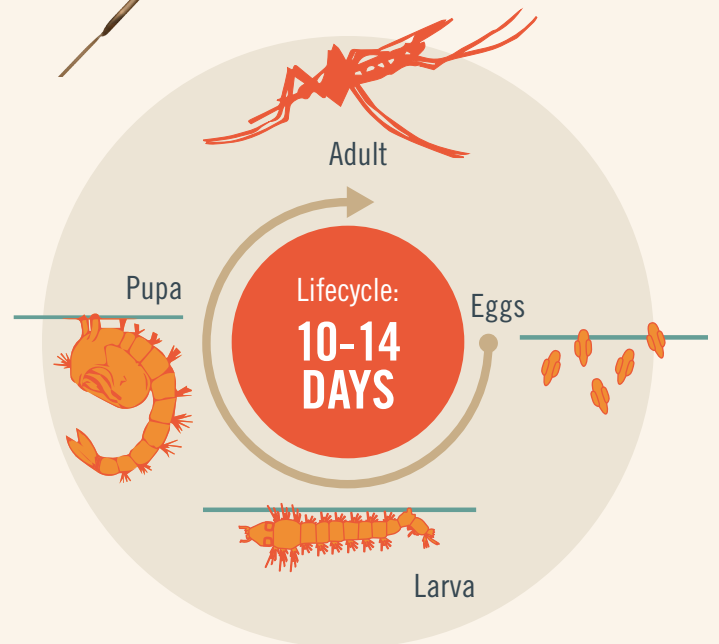
INDOORS

Prefers to feed and rest indoors.



FOUND

In rural and urban areas.



LEARN MORE: [SCJOHNSON.COM/MOSQUITOES](https://www.scjohnson.com/mosquitoes)

BROUGHT TO YOU BY SC JOHNSON, A FAMILY COMPANY.