

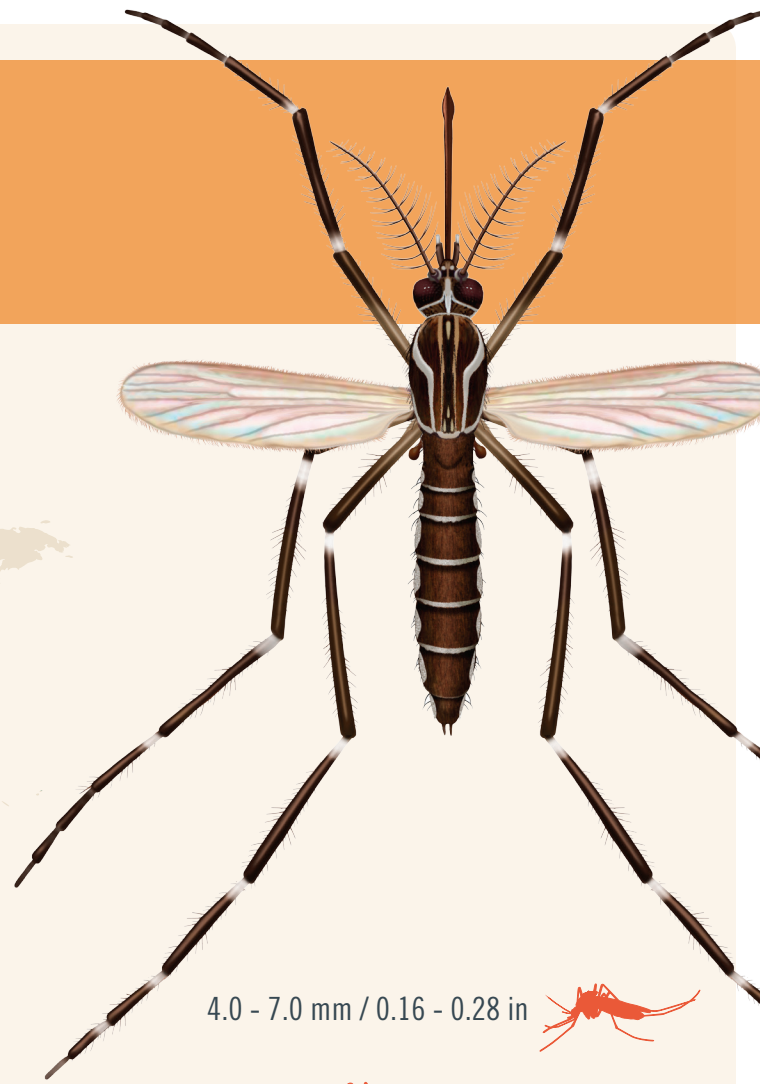
Aedes Aegypti

LOCATION:

Tropical and subtropical regions of the world



This map represents an estimate of the potential range of *Aedes aegypti*. It is not meant to represent risk for spread of disease.



4.0 - 7.0 mm / 0.16 - 0.28 in



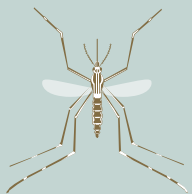
FACTS:



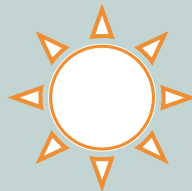
Lays eggs in small containers, tires, pots and bottles of standing water.



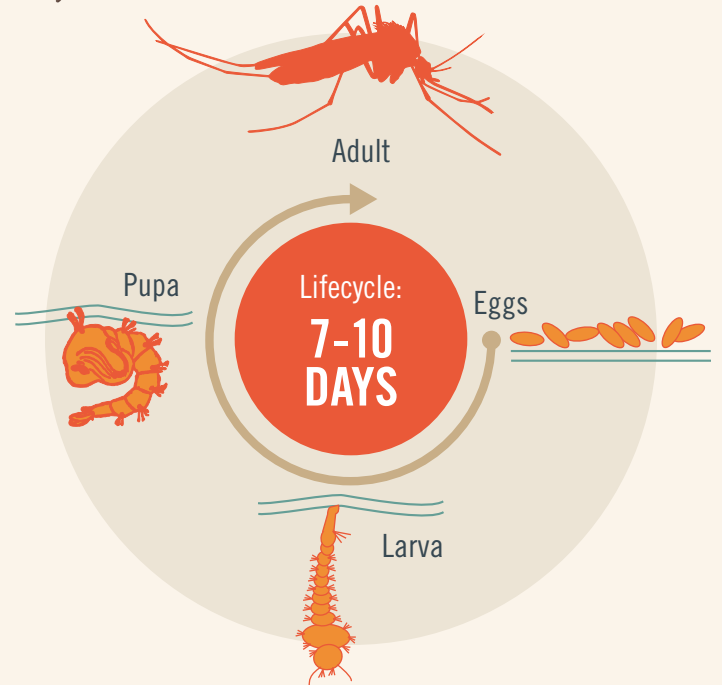
Prefers humans over other mammals.



Recognized by white markings on legs and thorax.

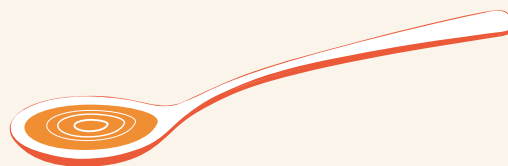


Primarily a daytime biter.



MINIMAL WATER REQUIRED

Larvae and pupae can develop in as little as a teaspoon of water.



FOUND

Near people and commonly found indoors.



LEARN MORE: SCJOHNSON.COM/MOSQUITOES

BROUGHT TO YOU BY SC JOHNSON, A FAMILY COMPANY.